

Springwell
School
SMILE • ACHIEVE • BELONG

Autumn

Newsletter

September 2025



Dear Families,

Welcome to the new school year, we are excited to welcome back our wonderful children and our 16 fabulous new pupils. I hope you were able to make the most of the beautiful summer weather with lots of outdoor fun #SMILE.

We enjoyed two successful summer schools at the start and end of the holiday and sandwiched in between the school kitchen has been fully re-furbished. Ange (our cook) is delighted with the improvements and eager to produce tasty lunches, you can check out the menu on the school website. We have also completed some improvements to the outdoor areas along with some class moves to ensure we maximise all our learning spaces for the needs of the children #ACHIEVE.

We have a new Chair of Governors, Kathryn Crowder, she has recently retired as a Principle Educational Psychologist so she has considerable knowledge and experience of SEND and will be instrumental in supporting us during her term of office. We also have a new Chief Executive officer (CEO) for Extol Trust, Craig Nicholson. He has already visited us on numerous occasions and described having a special school in the Trust as "gold dust". We look forward to his support and challenge when needed!

Many of you will be aware that we had a very positive Ofsted Inspection in June, we are delighted to remain Outstanding in all areas, we will of course continue to endeavour to improve as stated in the report: "They continually seek ways to strengthen the curriculum and expertise of staff. All share high aspirations for pupils". We have identified the following priorities for improvement:

- Embed our 'Think Family' approach with a focus on improving communication with families
- Establish a whole school CPD strategy which is specific to Springwell
- Build our capacity to work beyond Springwell to support SEND pupils in other schools and to further develop expertise and practice at Springwell
- Ensure we have the best possible curriculum in place for all children
- Enhance our 'Total Communication' offer through increased use of assistive technology

I hope you find the information in this Newsletter helpful, and I look forward to working in partnership with our families to do "our best" for every child #BELONG.

Best wishes,

3. Westley

Zoe Westley
HEAD TEACHER

Dear Families,

I am absolutely delighted to be taking over as Chair of governors this term and greatly looking forward to working with you all and staff as we go forward with this amazing school.

It has been lovely to see lots of smiles in and around school since the children returned and sense the positive feeling from everyone about the coming term. But despite retaining the very well deserved 'Outstanding' status in the summer term's Ofsted inspection, I know that staff and governors are keen to continue to improve in any way they can to provide the absolute best for your children.

As a teacher and Educational Psychologist, I have worked in Special Educational Needs and education for more than 30 years, working with a range of children and families to promote children's development and to help them thrive at their school. Visiting (and previously working) in Springwell, I have seen all your children achieve so many amazing things and feel proud to be able to continue supporting the school as Chair.

I would like to take this opportunity to thank the previous Chair, Paul Thompson, who was a governor for the school for ten years. His passion and commitment to the school was second to none and he will be a hard act to follow!

Best wishes,

Kathryn Crowder
Chair of Governors



Craig was previously 'Regional Education Director' for the north at Lift Schools, with oversight and responsibility for 15 schools.

With a background in both primary and secondary leadership, he has a strong track record of improving outcomes, building capacity, and supporting schools to thrive. Craig had been with Lift for 13 years, having previously spent over five years as Principal of North Ormesby Primary Academy in Middlesbrough where he led significant change and deepened his commitment to serving disadvantaged communities. Passionate about inclusivity and SEND, the power of oracy, technology in education, and the potential of collaboration across MATs, Craig brings a clear, values-driven vision to leadership and a deep-rooted, civic dedication for improving the life chances of all pupils and communities.

Regards,

Craig Nicholson
Chief Executive Officer



Hello From Our Family Support Workers!

Dani and Louise are excited to welcome parents, carers, grandparents, aunties, uncles and all other family members to our events throughout the school year.

We think it's important for everyone involved in your child's care to feel welcome..

We are hosting a Macmillan Coffee Morning on Friday 19th September 9.30am-11am and we would love to see you all there.

We will also have Nicola Harper, School Nurse, dropping in for any queries you may have or support you may need.

We look forward to seeing you all.



Important Dates



Macmillan Coffee Morning

Friday 19th September 2025

WORLD'S BIGGEST
**COFFEE
MORNING**
MACMILLAN
CANCER SUPPORT



Photograph Day

Thursday 25th September 2025



Immunisation Day

Tuesday 20th September 2025



World Smile Day

Friday 3rd October 2025



Harvest Festival

Monday 20th October 2025



Non-Uniform Day

Friday 24th October 2025



Hand hygiene

Tuesday 24th October 2025



Odd Socks Day

Monday 10th November 2025



Parents Evening

Wednesday 19th November 2025



**Springwell
School**
SMILE • ACHIEVE • BELONG

The school day

Start of day - 8.50am End of day - 3.10pm

Parent/Carer drop off

On a morning, the doors will open at 8.45am.
Doors will open again at 3.10pm.

- ★ Lions, Anacondas and Zebras - side gate
- ★ Elephants and Pangolins - Main entrance
- ★ Llamas, Camians, Jaguars, Toucans, Pandas, Dragons and Sharks
- family door in the car park

School Transport

School transport is organised by Hartlepool Local Authority. Please make sure your child is ready to get on the bus at their allotted time. If your child is late for the bus it may have a knock on effect for the rest of the run and possibly lesson start times. Please also be available to collect your child off the bus at the end of the day. If you need to contact school transport their phone number is **01429 523695/284382** or by email - passengers@hartlepool.gov.uk.

At home time, the school car park and surrounding school grounds can be extremely busy. We have children crossing the road at the front of school to get on the buses which are parked in the bus bay. Please be vigilant when parking and driving near the school at this time.

Please note, the car park on site is for staff members only.

Pupil information

A pupil information form will be sent out to be checked and returned to school.

Please ensure we have **at least two** emergency contact phone numbers and a second address of a close relative or friend, should there be any emergencies.

Please update school of any changes to medical information and allergies.

Thank you.

Staff - September 2025

HEAD TEACHER - Zoë Westley

DEPUTY HEAD - Sam Beacher

ASSISTANT HEAD TEACHERS - Caroline Derbyshire and Louise Hillan

SPARKLE + TEAM LEADER • SAM BEACHER (DHT)

Lions 8	Elephants 7	Zebras 6	Jaguars 7
Jess	Charmaine	Chris	Janis
Pam	Sharron	Jo	Sharron
Karen B	Sue R/Sandra	Jess R	Zoe B/Amanda O
Julie	Stacey	Samantha	Beth
Angela	Caitlin	Louisa	Andrew
Kathryn	Cara	Isobel	Chantelle
	Chrystal		

GLITTER + TEAM • CAROLINE DERBYSHIRE (AHT)

Toucans 8	Caimans 8	Pandas 9	Dragons 10
Louise	Andrew	Nadine	Nicola/Alex
Kelly	Annette	Annette	Rebekah
Jonathan	Chelsea /Alex	Georgia	Keri
Olga	Alex	Lynne/Cheryl	Sue W
Shelby	Claire	Helen	Emma
Gladys	Emma S	Caitlin	
	Abbie/Amanda		

SPEECH AND LANGUAGE ASSISTANTS - Kyra, Nicola T & Emma W

FAMILY SUPPORT WORKERS - Louise D & Dani

SCHOOL BUSINESS MANAGER - Heather Jennett

OFFICE MANAGER - Alison Shepherd

SITE MANAGER - Dean Henson



Jaguars 7

Aimee

Jo

Deb

Charley

Sade

Pangolins 6

Scott

Jo

Alisha

Christine

Allison

Chloe/Cara

Anacondas 8

Jane

Pam

Vicky/Amanda O

Yevheniia

Louise M

Sarah T

Sharks 10

Rachel O/Sarah C

Kelly

Karen H

Amanda H

Jo S

Attendance

At Springwell School we believe that regular attendance is important for all children. Children who do not have good attendance do less well at school.

Should I keep my child off school?

Yes

if your child has the following:

- Chickenpox for at least 5 days from the onset of the rash and until all blisters have crusted over
- Diarrhoea and Vomiting for 48 hours after their last episode
- Cold and Flu-like illness (including COVID-19) until they no longer have a high temperature and feel well enough to attend. Follow the national guidance if they've tested positive for COVID-19.
- Impetigo until the sores have crusted and healed, or 48 hours after they started antibiotics
- Measles for 4 days after the rash first appeared
- Mumps for 5 days after the swelling started Scabies they've had their first treatment
- Scarlet Fever for 24 hours after they started taking antibiotics
- Whooping Cough for 48 hours after they started taking antibiotic

No

if your child has the following:

- Hand, foot and mouth
- Glandular fever
- Head lice (*Children must be treated if live head lice are present*)
- Tonsillitis
- Threadworms
- Slapped cheek

What to do if you keep your child off school

Please inform the school office on 01429 280600 or via email office@springwellschool.co.uk as early as possible on the first day, if you do not contact school we will contact you to establish a reason for absence.

If your child uses School Transport please contact them on 523695/284382 or by email: passengers@hartlepool.gov.uk

Speech & Language

Kyra, Nicola and Emma, our Speech and Language Assistants, are available to discuss any concerns you may have about your child's speech and language. If you have a spare 5 minutes take a look at the speech and language section on the school website where you will see some pictures of the sessions with some of our amazing pupils.

We aim to deliver all sessions with pupils on a weekly basis. However, there are occasions due to unforeseen circumstances when we are required to support in class. If this continues for any length of time we will inform parents/carers of the change.

Kyra's Classes:	Nicola's classes:	Emma's classes:
Lions	Llamas	Pandas
Elephants	Pangolins	Dragons
Zebras	Anacondas	Sharks
Jaguars	Toucans	
	Caimans	

Physical Education

Children at Springwell School will engage in a broad Physical Education, Activity and Sport Curriculum throughout the academic year. Opportunities will include the chance to represent the school in a broad range of competitions, regular swimming lessons, outdoor and adventurous activities and a wide range of exciting PE lessons.

Rebound – At Springwell, lots of pupils will have the opportunity to access the trampoline. A rebound consent form will be sent home, please ensure this is completed. Children must have a long sleeved top and trousers to access the trampoline.

SWIMMING KIT - swimming trunks/costume and a towel.

PE KIT - white t-shirt and a pair of black shorts, with either a pair of trainers or plimsolls.

Events



SEND Inclusive event

Friday 17th October 2025 at Springwell School



Outdoor activities

Friday 7th November 2025 at Rossmere School

P.E. & Swimming Timetable

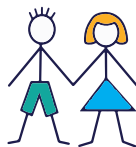
CLASS	P.E./REBOUND	SWIMMING
Lions	Thursday & Friday	Tuesday & Wednesday
Llamas	Monday	Wednesday
Pangolins	Thursday	Monday
Zebras	Wednesday	Friday
Anacondas	Tuesday	Thursday
Caimans	Wednesday & Thursday	Monday
Jaguars	Tuesday	Tuesday
Toucans	Wednesday & Friday	Thursday
Elephants	Monday	Friday
Pandas	Thursday	Tuesday
Dragons	Thursday	Tuesday
Sharks	Thursday	Tuesday

LOGOTOGO →

**Logo to Go are our official
school uniform supplier
and are located in Tower
Street, Hartlepool opposite
Charles Dickens.**

**They have a range of
uniform available to try on
and orders can be emailed
or requested in store,
their opening hours are
Monday to Friday 9am to 5pm.**

01429 408450 info@logotogo.uk



**Springwell
School**

SMILE • ACHIEVE • BELONG



Springwell
School
SMILE • ACHIEVE • BELONG



Springwell School

Wiltshire Way • Hartlepool • TS26 0TB

Tel: 01429 280600 • Email: office@springwellschool.co.uk

Head Teacher: Zoe Westley

Deputy Head Teacher: Sam Beacher

Website: www.springwellschool.co.uk

